

GENERAL INDEX

(Except Plumbing Code, Chapter XIII)

A		AUTOMATIC SPRINKLERS	
AIR DUCT		Definition	13
For court	25	Effect on area of building.....	19
For vent shaft	24	Fire department connection..	123
AISLES		Water supply	129
Live load	44	B	
Specifications	38	BASEMENT	
ALTERATIONS		Definition	6
Area limitation	19	When not a story.....	17
Compliance with codes.....	3	BATHROOM	
Definition	6	Light and ventilation.....	22
Height limitation	16	Window area required.....	24
Permit required	3	BEAMS AND GIRDERS	
Sidewalk shed, when required	71	In fireproof construction.....	76
To exit facilities	27	In semi-fireproof construction	76
To light and ventilation.....	21	In slow-burning construction	76
AMUSEMENT DEVICE		In wooden construction.....	66
Certificate	92	Steel construction	64
Inspection	92	Support	66-67
Operation	93	Templates	65
Repairs	90	BEARING WALL	
Repairs, notice of.....	93	Definition	6
Safeguards	92	BILLBOARD	
AMUSEMENT PARK		(see display sign)	
Fire extinguishing equipment	130	BOLTING	
APARTMENT		In wooden construction.....	63
Defined	6	Steel, when permitted.....	64
APARTMENT HOUSE		BRICK WORK	
(see multi-family house)		Strength	47
APPROVED		BUILDING SHANTY	
Definition	6	Within fire limits.....	15
APPROVED MASONRY		BUILDING	
(see masonry)		Alterations to conform to	
AREA		code	3
Definition, dimension	6	Area limitation	17
Definition, structure	6	Classification as to construc-	
AREA OF BUILDING		tion	14
Allowable areas	19	Classification as to occupan-	
Limitation	17	cies	14
Modification	17	Definition	6
ASYLUM		Doubtful classification	14
Special requirements	20	Exits required.....	27 et seq
AUTOMATIC		Floor capacities to be posted	45
Definition	6	Height defined	10
		Height limitation.....	15 et seq
		Inspection	4
		Light and ventilation....	21 et seq

CONSTRUCTION SAFEGUARDS

Demolition	74
Floor openings, protection....	73
Hoist	72
Personal injury, first aid....	74
Sanitation	74
Scaffolds	72
Sidewalk sheds	71
Stair facilities	73
Storage of materials.....	71
Temporary fence	72
Temporary flooring.....	73
Warning lights	73

CORBELLED CHIMNEYS

When allowed	59, 83
--------------------	--------

CORNICE

Construction	82
--------------------	----

CORRIDOR

Light and ventilation.....	23
----------------------------	----

COURT

Accessibility	26
Area	25
Concrete pavement	26
Definition	7
Drainage	26
Height defined	10
Intakes	25
To be unobstructed.....	26
Width	25
Width defined	13

CUPOLA CHIMNEY

Construction	88
--------------------	----

CURB LEVEL

Definition	7
Definition (re buildings)	7
Definition (re excavation)	7

CURTAIN

In place of assembly.....	40
---------------------------	----

CURTAIN WALL

Definition	7
------------------	---

D**DEAD LOAD**

(see, also, load)	
Definition	7

DEFINITIONS 6 to 13**DEMOLITION**

Procedure	74
Sidewalk shed, when required	71

DETENTION BUILDING

To be fireproof.....	20
----------------------	----

DISPLAY SIGN

Definition	7
Within fire limits.....	15

DIVISION WALL

Definition	7
------------------	---

DOORS AND DOORWAYS

Fastenings	37
Hanging	36
In fire partitions.....	79
Revolving door	36
Width	36

DORMER

Construction	80
--------------------	----

DRAINAGE

Courts	26
--------------	----

DRESSING ROOM

Connected with street.....	39
----------------------------	----

DWELLING

(see, also, residence, build- ing)	
Definition	7, 8
Height limitation	16

E**EGRESS**

(see exit facilities)

ELECTRIC EQUIPMENT

Appliances	126
Certificate	126
Inspection	126
Installation	126
National Electrical Code.....	126
Stage, in places of assembly..	41
Supplying current	126

ELEVATOR

Amusement devices	92
Carrying capacity	90
Certificate required	92
Definition	8
Design	90
Dumb waiters excepted.....	90
Inspection	92
Installation	90
Lighting	91
Operator	93
Repairs	90
Repairs, notice of.....	93
Riding of freight elevators restricted	91
Safety devices	91, 92
Use during construction.....	92

EXCAVATION

Protection	53
Support of neighboring walls	53
Warning lights	73

EXEMPTIONS	3	FIRE LIMITS	
EXISTING BUILDINGS		Alteration	16
(see building)		Definition	8
EXIT FACILITIES		Exceptions	15
Alterations	27	Garages and stables	15
Apartments	42	Limitations within	15
See Doorways	36	Restrictions against moving	
Enclosed exits	31	buildings	15
Exit signs	37	FIRE PARTITIONS	
Exterior stairways and fire		Alternate requirements	60
escapes	34	Construction	60, 78
Fire tower, construction	33	Definition	9
Fire tower, when required	29	In buildings of slow-burning	
Hallways	36	and ordinary construction	78
Horizontal exits	33	Openings	78
Hotels	42	Thickness	60
Hospitals	42	FIREPLACE	
See Interior stairway	30	Construction	86, 87
Kinds of exits	27	FIRE PREVENTION	
Lighting	37	(see fire protection)	
Location in buildings	30	FIREPROOF CONSTRUCTION	
Maintenance	37	Acceptable forms	75
Modifications	41, 42	Area limitation	17
Multi-family houses	42	Beams and girders	76
New buildings	27	Bulkhead	80
Number required	28	Columns	76
Passageway	35	Definition	8
Places of assembly	28	Floors and roofs	77
Proportioned to occupants	27	Lintels	77
To be kept clear	37	Mansards	80
EXTERIOR OPENINGS		Partition	78
(see door and window)		Pipes prohibited in fireproof-	
EXTERIOR STAIRWAYS		ing	76
Construction and arrange-		Protection of steel	76
ment	34, 35	Trusses	76
		When required	20
		FIRE PROTECTION	
FAN		(see, also, fire stopping)	
Forced draft system	125	Approved appliances	75
FENCE		Ceilings	80
Temporary, when required	72	Columns carrying walls, non-	
Within fire limits	72	fireproof building	66
FIRE ESCAPE		Columns, girders and beams	76
Construction	34	Exterior openings	79
Egress from	35	For structural members	75
Location	35	For vertical openings	78
Terminus	35	Heat appliances	85
FIRE EXTINGUISHING		In semi-fireproof construction	
EQUIPMENT		Interior openings	79
In amusement parks	130	Materials, fire-resistance tests	
Installation	127	Roofs	80
Location of outside connec-		Shafts	81
tion	128	Wooden construction	77
Stand pipes	127	FIRE RESISTIVE RATINGS	
		Incombustible materials	9

FIRE STOPPING

For pipes, shafting belts and conveyors	81
In exterior walls.....	82
In furred walls	82
In partition	82
In stairways	82
In studded-off spaces	82
Inspection	82

FIRE TOWER

Construction	33
When required	29

FIRE WALL

Alternate requirements	60
Construction	60
Definition	9
Openings permitted	79
Relation to area restriction..	17
Thickness	60
When required	17

FLOOR OPENINGS

Protection during construction	73
--------------------------------------	----

FLOORING

In fireproof construction.....	77
Temporary during construction	73

FLUE

(see, also, chimney)	
Construction, high heat appliances	85
Construction, low heat appliances	85
Construction, medium heat appliances	85
For gas appliances.....	89
For incinerators	85
Linings	84
Required flues	83
Restricted use	86
Size	86
To be cleaned.....	86

FOOTING

(see, also, foundation)	
Design	45
Masonry	54
Steel grillage.....	54
When wood permitted.....	54

FORCED DRAFT SYSTEM

Installation	125
--------------------	-----

FOUNDATION

(see, also, footing)	
Minimum depth.....	54
Piles	54

FOUNDATION WALL

Definition	9
Materials	57
Thickness	57

FRAME CONSTRUCTION

(see, also, wooden construction)	
Area limitation	17
Definition	10
Erection, details	69
Height limitations	15

FLOORS

In fireproof construction.....	77
In semi-fireproof construction	77
In slow-burning construction	77
Loads for designing new floors	44, 45
Temporary during construction	73

FREIGHT ELEVATOR

(see elevator)

G**GALLERY**

Seat arrangement	38
------------------------	----

GARAGE

(see, also, storage building)	
Area limitation	17
Combined with other occupancies	19
Definition	10
Private	10
Public	10
Within fire limits.....	15

GAS APPLIANCES

Installation	89
--------------------	----

GAS CUTTING

Requirements	65
--------------------	----

GAS PIPING

Installation	89
--------------------	----

GIRDERS

(see beams)

GRADE

Definition	10
------------------	----

GRANDSTAND

(see place of assembly)

GREENHOUSE

Within fire limits.....	15
-------------------------	----

GYPSUM MORTAR

Definition	10
------------------	----

H		HOSPITAL	
HABITABLE ROOM		To be fireproof.....	20
Alteration restricted	21	Of one story, need not be fireproof	20
Below grade	23		
Light and ventilation	21	I	
Size	21	ICE HOUSES	
Window area required	24	Within fire limits.....	15
HALL		INCINERATORS	
(see corridor)		Construction, non-fuel fired..	85
HALLWAY		Construction, fuel fired.....	86
(see, also, passageway and exit facilities)		Flues	85
Live load	43	Installation	85
Width	36	INSPECTION	
HANGAR		(see, also, building official)	
Classification (see definition of storage building)		Amusement device	92
HEAT APPLIANCES		By building official	4
Drying rooms	85	Electrical work	126
Fire protection	83	Elevator	92
Flues for	83	Fire-stopping	82
Smoke pipes	83	Gas piping	89
HEATING SYSTEM		INSTITUTIONAL BUILDING	
Registers	125	Definition	8
HEAVY TIMBER CONSTRUCTION		Height limitation	16
Area limitation	17	Light and ventilation	22
Beams and girders.....	76	Stairways and corridors to be ventilated	23
Columns	76	INTAKE	
Definition	10	(see air duct)	
Floors	77	INTERIOR STAIRWAYS	
Height limitation	16	Construction	30
Lintels	77	Hand rails	32
Power drives	81	Landings	32
Roofs	10	To be enclosed in fire parti- tions	31
Walls	10	Treads and risers.....	32
HEIGHT		Width	31
Definition (re building).....	10	IRON AND STEEL	
Definition (re court).....	10	(see steel construction)	
Definition (re story).....	10	J	
Definition (re wall)	10	JAIL	
Features not included in.....	17	To be fireproof.....	20
Limitations	15, 16	JOISTS	
HOIST		Steel	76
(see construction hoist)		Strength of wooden joists....	49
HOLLOW BLOCK		Wooden	66
Definition	11	L	
Masonry	61	LIGHT AND VENTILATION	
Restriction of use.....	60	Alterations	21
Stresses	47	Bathrooms and waterclosets..	22
HORIZONTAL EXIT		Business and workrooms....	22
Construction and arrange- ment	33, 34	Cellar	23
		Courts	25

LIGHT AND VENTILATION

(continued)

Institutional buildings	22
Mechanical ventilation	25
New buildings	21
Public buildings	22
Rooms, size of	21
Rooms below grade	23
Rooms needing special devices	23
Service pantries and store-rooms	23
Stairways and corridors	23
Ventilating skylights	24
Vent shafts	24
Windows	24

LIGHTING

Exit facilities	37
When required	37

LIME MORTAR

Definition	11
------------------	----

LINTELS

In fireproof construction	77
In semi-fireproof construction	77
In heavy timber construction	77
Steel	64
Templates	65

LIVE LOADS

(see, also, load)

Definition	11
Human occupancy	43
Industrial or commercial occupancy	44
Roof loads	44
Reductions in live loads	45
To be posted for each floor	45

LOAD

(see, also, live loads)

Assumed dead-loads	43
Concentration	43
Dead-load defined	7
Live-load defined	11
Permissible loads to be posted	45
Permissible reduction in live-loads	45
Roof	44
Stairway and passageway	44
To be kept within floor capacity	44
Wind pressure	45

LOCAL REGULATIONS

Not limited to code	3
---------------------------	---

LOT

Definition	11
------------------	----

M**MANSARD**

Construction	80
In fireproof construction	80

MANTEL

Wooden	69
--------------	----

MASONRY

Approved masonry defined..	6, 57
Brick	47
Construction, thickness	58
Hollow wall, hollow block and solid block	47, 61
In fireproof construction	75
Protection against freezing	63
Stone	48
Stucco	70
Veneer	48
Wall thickness	60
Working stresses	43

MATERIAL

(see, also, building material)	
Storage during construction ..	71

MEANS OF EGRESS

(see exit facilities)

MILL CONSTRUCTION

(see definition of heavy timber)

MORTAR

Cement-lime mortar defined..	11
Cement mortar defined	11
Lime mortar defined	11

MOTOR VEHICLE REPAIR SHOP

(see definition of garage, 10)

MOVING BUILDINGS

When prohibited	15
-----------------------	----

MULTI-FAMILY HOUSE

Definition	11
Exits required	42
Fire protection for openings ..	78

N**NATIONAL ELECTRICAL CODE**

Used as standard	126
------------------------	-----

NUMBER OF OCCUPANTS

Related to exits	27
------------------------	----

O**OCCUPANCY**

Classification	14
Doubtful	14
Meaning of "occupied"	11
Mixed	14
Mixed, requirements	19, 20

OCCUPANTS

Number permitted	27
------------------------	----

OFFICE BUILDING

(see business buildings)

OPENINGS, WALL AND PARTITION		PILE (continued)	
Fire protection	79	Wood	55
ORDINARY CONSTRUCTION		Wood pile, sustaining power..	55
Area limitation	17	PLACE OF ASSEMBLY	
Definition	11	(see, also, public buildings)	
Height limitation	16	Aisles	38
OUTHOUSE		Curtain	40
Within fire limits.....	15	Dressing room	39
OWNER		Exit required	28, 41
Definition	12	Galleries	33
P		Grandstands	38
PARAPET WALL		Height limitation	16
Construction	59, 76	Live-load	43
PARTIAL COMPLIANCE		Seating	37
Under code	14	Stage	39
PARTITION		PLANS	
Construction, bearing	61, 68	Certified copy on job.....	4
Construction, non-bearing,	61, 68	For proposed work.....	4
Fire-stopping	82	PLUMBING	
In fireproof construction.....	75	(see, also, plumbing index)	
In semi-fireproof construction	78	Installation	94
PARTY WALL		Water supply	105
Definition	12	PRISONS	
Thickness	75	Special requirement	20
PASSAGEWAY		PRIVATE BUILDING	
(see, also, exit facilities)		Definition	3
Construction	35	PRIVATE GARAGE	
Definition	12	(see garage)	
Live-load	44	Combined with dwelling.....	20
PASSENGER ELEVATOR		PUBLIC BUILDING	
(see elevator)		Area limitation	17
PENT-HOUSE		Definition	3
Construction	80	Height limitation	16
Definition	12	Height limitation, exception..	17
PERMIT		Light and ventilation.....	22
Action on application	4	PUBLIC GARAGE	
Application for	4	(see garage)	
Form	5	R	
Plans accompanying	4	RADIATOR	
When required	4	Not to obstruct exit facilities	37
PERSONAL INJURY		RECESSES IN WALLS	
First aid	74	Restriction	59, 60
PILE		REINFORCED BRICK	
Concrete mixture for piles....	56	Definition	12
Concrete, poured	55	Design	62
Concrete, moulded	56	REINFORCED CONCRETE	
General requirements.....	54	Concrete mixture.....	61
Tests	57	Definitions	12

REINFORCED CONCRETE

(continued)

Protection of reinforcement 62, 63

Protection against frost..... 63

Reinforcement 62

Removal of forms..... 63

Walls 62

Working stresses 48

REPAIR

Definition 12

Elevator 90

RESIDENCE BUILDING

Area limitation 17

Definition 8

Height limitation 16

RETAINING WALL

Construction and design..... 57

REVOLVING DOOR

Use limited 36

RIVETING

When required 64

ROOF

(see, also, roofing and roof structure)

Construction 80

Live load 44

ROOFING

(see, also, roof)

Materials 81

ROOF STRUCTURE

Bulkheads 80

Construction 30

Dormers 30

Mansards 30

Pent-houses 30

Tanks 30

ROOM

(see, also, habitable rooms)

Exit required 25

Light and ventilation..... 21

Below grade, light and ventilation 23

S

SAFEGUARDS DURING CONSTRUCTION

(see construction safeguards)

SCAFFOLDS

Construction and protection.. 72

SCHOOL

(see public building)

Height limitation 16

SEATING

Arrangement 37, 38

SEMI-FIREPROOF CONSTRUCTION

Area limitation 17

Beams and girders 76

Columns 76

Definition 12

Floors 77

Height limitation 15

Lintels 77

Partitions 78

Roofs 80

Trusses 76

SERVICE PANTRY

Light and ventilation..... 23

SHAFT

Definition 13

Openings permitted 78

Vent shafts 24

SHAFT-WAY

(see shaft)

SIDEWALK SHED

Walkway 71

When required 71

SIGN

(see display sign)

SKYLIGHT

Construction 31

For light and ventilation..... 25

Vent shaft 24

When screening required..... 31

SMOKESTACK

Construction 37

Exterior 37

Height 37

Interior 38

Restricted use 38

SOIL

Bearing capacity 51

Filled-in ground 52

Tests 52

SOLID BLOCK

Definition 13

SPECIFICATIONS

Must be complete..... 4

STAGE (see, also, places of assembly)		STEEL AND IRON CONSTRUCTION (continued)	
Appurtenant rooms	39	Tie-rods	65
Construction	40	Welding	64
Doors and windows	40	Working stresses	49
Dressing rooms	39	STONE MASONRY	
Electrical equipment	41	Working stresses	48
Enclosure walls	39	STORAGE BUILDING	
Motion picture projection booth	41	Area limitation	17
Proscenium wall	39	Definition	8
STAIRS		Height limitation	16
(see, also, stairway)		Height limitation exceptions	17
Fire-stopping	82	STORY	
Hand rails	32	Defined	13
Required width	31	STOREROOM	
Space under, to be left clear	33	Light and ventilation	23
Support of treads	30	STRUCTURE	
Temporary	73	(see, also, building)	
To be installed promptly	73	Definition	13
Treads and risers	32	STUCCO	
Winders prohibited	32	Construction	70
STAIRWAY			
(see, also, stairs)		T	
Definition	13	TEMPLATES	
Exterior construction	34	Steel and iron construction	65
Fire protection	78	TERMITES	
Interior construction	30	Protection against	68
Interior enclosure	31	TESTS	
Landings	32	New material	46
Light and ventilation	23	Pile, capacity	54
Live load	43	Soil, bearing capacity	51
Outlet	30	Standpipes	130
When required to extend roof	30	THEATRES	
STANDARD FIRE TEST		(see, also, places of assembly)	
Definition	13	See definition of public building	8
STANDPIPES		Exits required	23
Construction	123	To be fireproof	20
Fire department connection	123	TOILET FACILITIES	
Location	127	(see, also, water closet)	
Number	127	During construction	74
Size	127	TRIM	
Tests	129	(see interior finish)	
Water supply	129		
When required	127	U	
STEEL AND IRON CONSTRUCTION		UNPROTECTED METAL CONSTRUCTION	
Bolting	64	Definition	13
Cast-iron columns	64	Height limitation	17
Cast-iron working stresses	48	Within fire limits	15
Column bases	64		
Gas cutting	65		
Lintels, beams and girders	64		
Protection against corrosion	65		
Protection against fire	66		
Riveting	64		
Steel columns	64		
Templates	65		

UNSAFE BUILDINGS		WELDING	
Condemned	5	Requirements for	64, 65
Permit for removal or repair	5	When permitted	65
Punishment for allowing to stand	5	WINDOW	
		(see, also, wall openings)	
		Glass area required.....	24
		Size	24
		When fire protection required	79
		WIND PRESSURE	
		Allowable stresses	45, 46
		Roofs	46
		When considered	45
		WIRED GLASS	
		Enclosures for outside stairways	34
		WOODEN CONSTRUCTION	
		(see, also, frame construction)	
		Anchors	66
		Beams	66
		Bolting	68
		Columns and posts.....	67
		Fire prevention	68, 69
		Girders	67
		Joists	66
		Posts	67
		Protection against termites	63
		Working stresses	49-51
		WORKING STRESSES	
		Cast iron	48
		Concrete, plain	47
		Concrete, reinforced	48
		General requirements	46
		Higher stresses, when permitted	46
		Hollow walls, tile or block....	47
		Masonry, brick	47
		Masonry, stone	48
		New materials	46
		Steel	49
		Wood	49-51
		WORKMANSHIP	
		Quality required	53
		WORKSHOP	
		Included in business building	7
		Light and ventilation	22
		Y	
		YARD	
		Definition	13
UNSAFE BUILDINGS			
Condemned	5		
Permit for removal or repair	5		
Punishment for allowing to stand	5		
		V	
VENEER			
Working stresses	48		
VENT FLUES			
Construction	89		
For gas appliances.....	89		
VENTILATION			
(see, also, light and ventilation)			
Forced draft system.....	125		
VENT SHAFT			
(see, also, shaft)			
Air duct required.....	24		
Size	24		
Skylight required	24		
VIOLATION			
Notice	5		
Penalty	5		
		W	
WALL			
(see, also, foundation wall)			
Chases and recesses.....	59		
Fire-stopping	81		
Fire walls	75		
Height defined	10		
Hollow	47		
Hollow block and solid block restricted	47		
In frame construction.....	69		
Parapets	59, 76		
Party walls	75		
Reinforced concrete	62		
Support during excavation....	53		
Thickness of fire walls.....	75		
Underpinning, when required	53		
WATER CLOSET			
(see, also, toilet facilities)			
Light and ventilation.....	22		
WATER SUPPLY			
During construction	74		
Required	105		

INDEX TO PLUMBING CODE

B	DEFINITIONS	94
BACK-WATER VALVES	DIRECTION	
Requirements	Change of	98
BRANCH PIPING SYSTEM	DRAINS	
Definition	(see house drains and sewers and storm water drains)	
BRASS PIPE	E	
(see pipe)	EXPANSION BOLTS	
BUSHINGS	Hanging fixtures to walls.....	102
Soldering, weights		
	F	
C	FITTINGS	
CAULKING	Those prohibited	98
Calked joints	Threaded	100
Ferrules		
CAST-IRON PIPE	FIXTURES	
(see pipe)	Classification of fixtures.....	108
CESSPOOLS	Floor and shower drains are fixtures	107
Connection	Frost-proof closets	107
Location	Installation	106
Septic tank	Kinds prohibited	107
CHANGE IN DIRECTION	Materials	106
	Overflow pipe	107
CIRCUIT AND LOOP VENTS	Strainers	107
When permitted	Units	109
With fixture traps.....	Ventilation	107
	Watercloset bowls	107
CLEANOUTS	FLUSHING	
(see, also, traps and cleanouts)	Requirements	105
Equivalent		
Manholes	G	
Pipe	GRADES	
Pipe, where required.....	Of horizontal piping	98
CONDUCTORS	GREASE TRAP	
(see, also, gutters)	(see traps and cleanouts)	
Test required	GUTTERS AND LEADERS	
	Defective, to be replaced.....	120
CONNECTIONS	House, size	119
(see, also, joints and connections)	Inside conductors, material..	119
Floor with closet, urinal, etc.	Outside conductors, size and material	119
Forms prohibited		
Incrasers and reducers.....	H	
	HORIZONTAL PIPING	
D	Grades	98
DEAD END	HOUSE DRAINS AND SEWERS	
Definition	Combined storm and sanitary drains and sewers.....	117
To be avoided	Defined	97

HOUSE DRAINS AND SEWERS

(continued)

- Depth 116
- Drainage below sewer level..... 118
- Excavations 115
- In old houses..... 114
- Materials 115, 118
- Must be independent..... 113
- Must be independent, excep-
tion 114
- Prohibited connections 114
- Size 116, 117
- Size storm drains..... 117
- Tests required 123
- Underground 115
- With cesspools 114

I

INSPECTIONS

- Notification by plumber..... 121
- Required 121

J

JOINTS AND CONNECTIONS

(see, also, connections)

- Calked 101
- Cast-iron 101
- Forms prohibited 102
- Lead to iron..... 102
- Screw 101
- Slip 102
- Vitrified pipe 101
- Water- and air-tight..... 101

L

LEAD PIPE

(see, also, pipe)

- Joints 101

M

MAIN PIPING SYSTEM

- Defined 97

MAINTENANCE

- Requirements 121

MANHOLES

(see traps and cleanouts)

MATERIAL

- New, to be approved..... 102
- Protection against corrosion.. 98
- To be free from defects..... 98

N

NIPPLES

- Soldering, weights 101

O

OWNER

- Installation by..... 98

P

PIPE

(see, also, soil pipe)

- Brass and copper..... 99
- Cast-iron 99
- Lead 99
- Mild steel 99
- Size and length..... 97
- Size of water pipe..... 105
- Vitrified clay or shale..... 99
- Wrought-iron 99

PLUMBING

- Defined 94
- Installed by owner..... 98
- Principles 94-96
- System, defined 96

PRIVIES

- Allowed during construction.. 115

PROHIBITED FITTINGS 98

R

REFRIGERATOR WASTE

(see waste pipe)

S

SAND TRAP

(see traps and cleanouts)

SCREW JOINTS

(see joints and connections)

SEPTIC TANK

(see cesspools)

SHEET METAL

- Copper and brass..... 100
- Galvanized iron..... 100
- Lead 100

SOIL, WASTE AND VENT PIPES

(see, also, stack)

- Changes in old buildings..... 110
- Classification of fixtures..... 108
- Connections prohibited 110
- Material 103
- Protection from frost..... 110
- Required sizes 112
- Roof extensions..... 111
- Size of pipes..... 103, 109
- Stacks 109, 110

SOIL PIPE

(see, also, soil, waste and vent pipes)

- Changing in old buildings..... 110
- Definition 97
- Size and material..... 103, 109

SOLDERING NIPPLES

Requirements 101

STACK

(see, also, soil, waste and vent pipes)

Connection with fixture traps 111
 Definition 97
 Roof extension 111
 Soil and waste 109
 Soil and waste, size 110
 Supported at bases 98
 Terminals 111
 Vent stack sizes 112

STORM-WATER DRAINS

(see, also, gutters)

Gutters and leaders 119
 Materials for inside and outside conductors 119
 Subsoil drains 120
 To be trapped, when combined with sanitary sewer 119
 Yards, areas, roofs 118

STRAINERS

(See fixtures)

T**TESTS**

Air test 122
 Order of tests when made separately 123
 Other tests and requirements 124
 Water test 122
 Work not to be covered till tested 123

TRAPS AND CLEANOUTS

(see, also, cleanouts)

Connection with waste stack vent 111
 Definition 96
 Distance of trap from vent 111
 Forms prohibited 103
 Grease 104
 Materials allowed 103
 Minimum trap diameters 109
 Protection from frost 103
 Sand 104
 Seal, defined 96
 Size required 103
 To be self-cleaning 102
 Water seal 103
 Where required 103

V**VALVES**

Requirements for water system 106

VENT

(see, also, stack and vent pipe)
 Branch, requirements 113
 Circuit and loop vent 113
 Distance to trap 111
 Fixture traps 111
 Main, requirements 112
 Required sizes 112
 When not required 113

VENT PIPE

(see, also, soil, waste and vent pipes)

Definition 97
 Grades and connections 113
 Local, defined 97

VENTILATION

Location of fixtures 107
 Pipes to be separate 108

VITRIFIED CLAY

(see pipe)

W**WASTE PIPE**

Definition 97
 Refrigerator 120
 Refrigerator, size 120
 Special, defined 97

WATERCLOSET

(see, also, fixtures)

Bowls 107
 Frostproof 107

WATER SUPPLY AND DISTRIBUTION

Distribution pipe 96, 105
 Flushing requirements 105
 Service pipe 96, 105
 Size of water pipe 105, 106
 To fixtures 105
 Valves 106

WORKMANSHIP

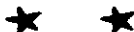
To be of good quality 98

WROUGHT-IRON PIPE

(see pipe)

*A*dvvertisements

WHENEVER you desire masonry materials, whether for vertical construction, as in walls, or in horizontal construction, such as wall footings, foundations, floors, walkways, pavements, and such like, whether plain or reinforced masonry, think of your problem in terms of **BRICK AND STRUCTURAL CLAY TILE**. Through the use of such materials you can develop maximum results through low first cost, minimum insurance, maximum indestructibility, pleasing appearance. No other masonry material is so conducive to such a variety of uses: **STRUCTURAL, ARCHITECTURAL, ECONOMICAL**. Patronize North Carolina industries when you can and design for maximum hand-placed **BRICK AND STRUCTURAL CLAY TILE** materials always.



Virginia-Carolina Clays, Inc.
Statesville, N. C.

BUILD FOR THE FUTURE

.. with metals that cannot rust

ANACONDA COPPER — *for exterior sheet metal work, ducts, etc.*

ANACONDA 85 RED-BRASS PIPES — *for highly corrosive waters. (The highest quality corrosion-resisting pipe obtainable at moderate cost.)*

ANACONDA 67 BRASS PIPE — *for normally corrosive waters.*

ANACONDA COPPER WATER TUBES — *Types K and L, for plumbing and heating lines.*

ANACONDA SOLDER AND FLARED TUBE FITTINGS — *for assembling copper tubes.*

THE AMERICAN BRASS COMPANY

General Offices: Waterbury, Connecticut

MOUNT AIRY GRANITE

The dignity, beauty, and durability of Mount Airy Granite may be obtained at costs which are entirely practical for residences, schools, and churches.

Granite Buildings Have Much Greater Value — The Cost Is Very Little More

Write for information, samples, and preliminary estimates.

THE NORTH CAROLINA GRANITE CORPORATION

Mount Airy, North Carolina

WOLMAN SALTS

A UNIVERSAL WOOD PRESERVATIVE

WOLMAN SALTS is an accepted equivalent to creosote oil in the Building Code of the City of Los Angeles, California, which requires that the underpinning of all frame structures be of lumber impregnated with either of these two preservatives.

WOLMANIZED LUMBER is clean, odorless, paintable, slightly fire-retardant, and affords permanent protection against termites and decay.

It is non-leaching, non-exuding, and non-corrosive to metals.

Specified by leading architects and engineers.

AMERICAN LUMBER & TREATING COMPANY

37 WEST VAN BUREN ST., CHICAGO, ILL.

Branch Offices

NEW YORK SAN FRANCISCO BOSTON ST. LOUIS
LOS ANGELES SHREVEPORT

NORTH CAROLINA HOME INSURANCE COMPANY

RALEIGH, N. C.

North Carolina's Oldest Stock
Fire Insurance Company

CAPITAL AND SURPLUS OVER \$1,000,000

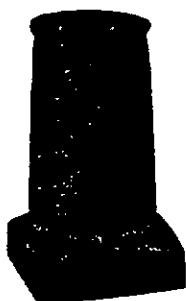
ESTABLISHED 1868

ALEXANDER WEBB, President

MADE IN CAROLINA

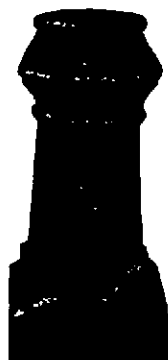


**Pomona Vitrified Pipe for Sanitary
Sewer and Drain Lines**



**POMONA
PERMANENT**

**FIRE-PROOF
FLUE LINING**



**FLUE LINING
WALL COPING
SILO BLOCKS
FIRE BRICK
SEPTIC TANKS**

**DRAIN PIPE
DRAIN TILE
AND OTHER
CLAY
PRODUCTS**

THIS SPACE HAS BEEN TAKEN

BY

*The North Carolina Chapter
of the
American Institute of Architects*

IN ORDER TO AID IN THE PUBLICATION

OF

THE NORTH CAROLINA
BUILDING CODE

COMPLIMENTS

OF

W. R. Bonsal Co.

INCORPORATED

HAMLET, NORTH CAROLINA

PRODUCERS OF

HIGH-GRADE

GRAVEL AND SAND
GRADED TO ANY SPECIFICATIONS

Complete Piping Services

INCLUDING

Fire Protection:

Wet-Pipe Sprinkler Systems—for heated buildings.

Dry-Pipe Sprinkler Systems—for unheated buildings and unheated portions of properties.

Simplex Sprinkler Systems—for properties where fire hazard is not severe and where city water is not available.

Outside Open Head Systems (Water Curtains)—for protection against exposure fires.

Underground Yard Piping and Hydrant Systems.

Inspection Service—providing thorough and periodic examination of the Sprinkler equipments.

Cast Iron and Malleable Iron Pipe Fittings:

Complete lines of Malleable Iron Screwed Fittings and Cast Iron Screwed, Flanged, Long Turn Sprinkler and Drainage Fittings.

Welding Pipe Fittings and Fabricated Piping:

Full line of Welding Fittings for all services.

Fabricated Piping for power plants, heating and industrial piping systems, including all types of pipe bends, headers and lap joints.

Adjustable Pipe Hangers and Supports:

A complete line of Hangers and Supports adjustable both during and after erection.

"Thermoliers"—the Grinnell Unit Heaters:

The modern Heaters for industrial and mercantile properties. Also Air Conditioning Type for cooling and dehumidifying.

Humidifying Systems and Devices.

Pipe, Valves, Traps and Heating Specialties.

Literature and engineering information on any of the above furnished on request.



1431 West Morehead Street

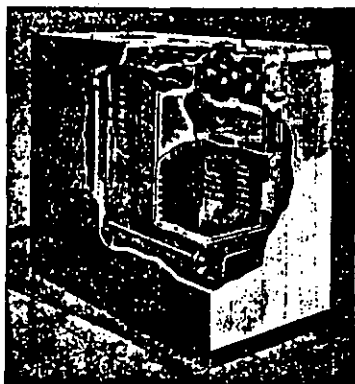
CHARLOTTE, N. C.

Telephone: Charlotte 2-2181

BRANCH OFFICES IN PRINCIPAL CITIES OF UNITED STATES
AND CANADA

National Series 018

Cast Iron Oil Heating Boiler

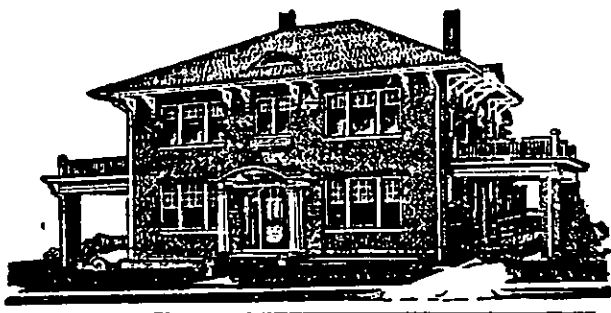


Designed specifically for oil burning. Built-in coils for domestic hot water supply. Jacket styled by Lurelle Guild. Color scheme black, red, and aluminum. Rear jacket compartment houses burner and controls.

National Scale Free Pipe
Mill Supplies
Machinery

DILLON SUPPLY CO.

RALEIGH — DURHAM



Borden Brick and Tile Co.

Manufacturers of High-grade

- ***BUILDING BRICK***
- ***FACE BRICK***
- ***HOLLOW TILE***

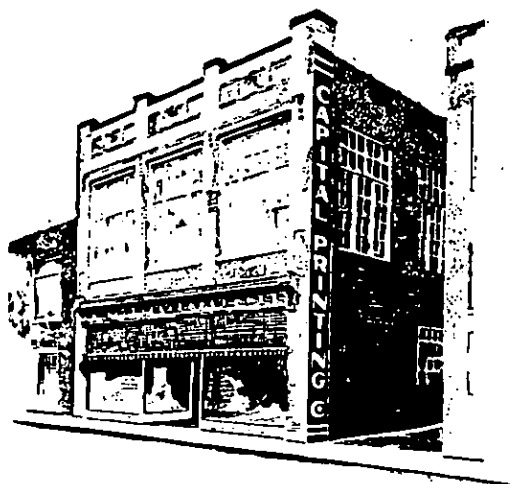


Office, Borden Building, Goldsboro, N. C.

Phone 641

Long Distance Phone 9903

Offices: Goldsboro—Sanford—Durham—Greensboro



Capital PRINTING COMPANY

- PRINTERS
- RULERS
- BINDERS

We carry a large line of

Office Supplies and Equipment

AGENTS for

GLOBE-WERNICKE STEEL FURNITURE

110 West Hargett Street

RALEIGH, N. C.

CRUSHED STONE
AND GRAVEL

ALSO

WASHED SAND

... for all purposes

GROVE STONE AND
SAND COMPANY

SWANNANOA, N. C.

WOODWORK

Of All Kinds

★ ★

Equipped for Producing the Finest Mill-
work. A Large and Complete Stock
of Mouldings, Sash, and Doors.

★ ★

MARTIN MILLWORK COMPANY

Harrison Avenue and Morgan Street—P. O. Box 723

Raleigh, North Carolina

**MODERN PLUMBING, HEATING, INDUSTRIAL, AND
WATERWORKS SUPPLIES and EQUIPMENT**

**For Homes, Schools, Factories, Industrial Plants,
Office Buildings, Stores, Waterworks
and Sewerage Disposal Plants**

Kohler of Kohler Plumbing Fixtures; National Steel and Cast Iron Boilers and Radiation; Youngstown Steel Pipe; Byers Genuine Wrought Iron Pipe; Alino Self-Centering Terra Cotta Sewer Pipe and Fittings; Strong, Carlyle & Hammond Traps and Steam Specialties; Mac-It Set Screws and Cap Screws; Buckeye Conduit; Lunkenheimer, O.I.C., and Jenkins Valves; Mueller Waterworks Equipment; and Plumbing, Heating, and Industrial Supplies.

ATLAS SUPPLY COMPANY

Winston-Salem, N. C.

LONG DISTANCE PHONES 6112. 6113. 6114

SPECIALIZING IN ...

Building Contract Wiring and Power Line Construction

Electrical Supplies and Equipment of All Kinds

**THOMPSON
ELECTRICAL COMPANY**

20 West Hargett Street — Telephone 370

RALEIGH, N. C.

BUCKINGHAM-VIRGINIA Roofing Slate

BUCKINGHAM-VIRGINIA SLATE is the most economical roofing obtainable for the life of buildings. This has been demonstrated throughout the South during the past century:

It is guaranteed unfading and non-disintegrating. Therefore, it can be matched after any length of time.

Fading in slate is the beginning of disintegration, resulting in expensive repairs and eventually a new roof.

We respectfully solicit architects' specifications for Buckingham-Virginia Slate on basis of proven quality and unequaled texture.

Having the largest production of Blue-Black Unfading Slate in the United States, prompt shipment can be made from $3\frac{1}{16}$ " to 1" thick.

**Buckingham-Virginia Slate
Corporation**

RICHMOND,

VIRGINIA



Lighting
Safety Switches
No-Fuse Breakers
and
Panel Boards



Westinghouse
ELECTRIC & MANUFACTURING CO.

ATLANTA, GEORGIA

CAROLINAS BRANCH
Associated General Contractors
of America, Inc.



BUILD FOR PERMANENCY

★ ★

EMPLOY REPUTABLE

Architects
Engineers
and
Contractors

★ ★

Executive Offices

201 Builders Building.....Charlotte, North Carolina

V. P. Loftis

Executive Secretary

★ ★

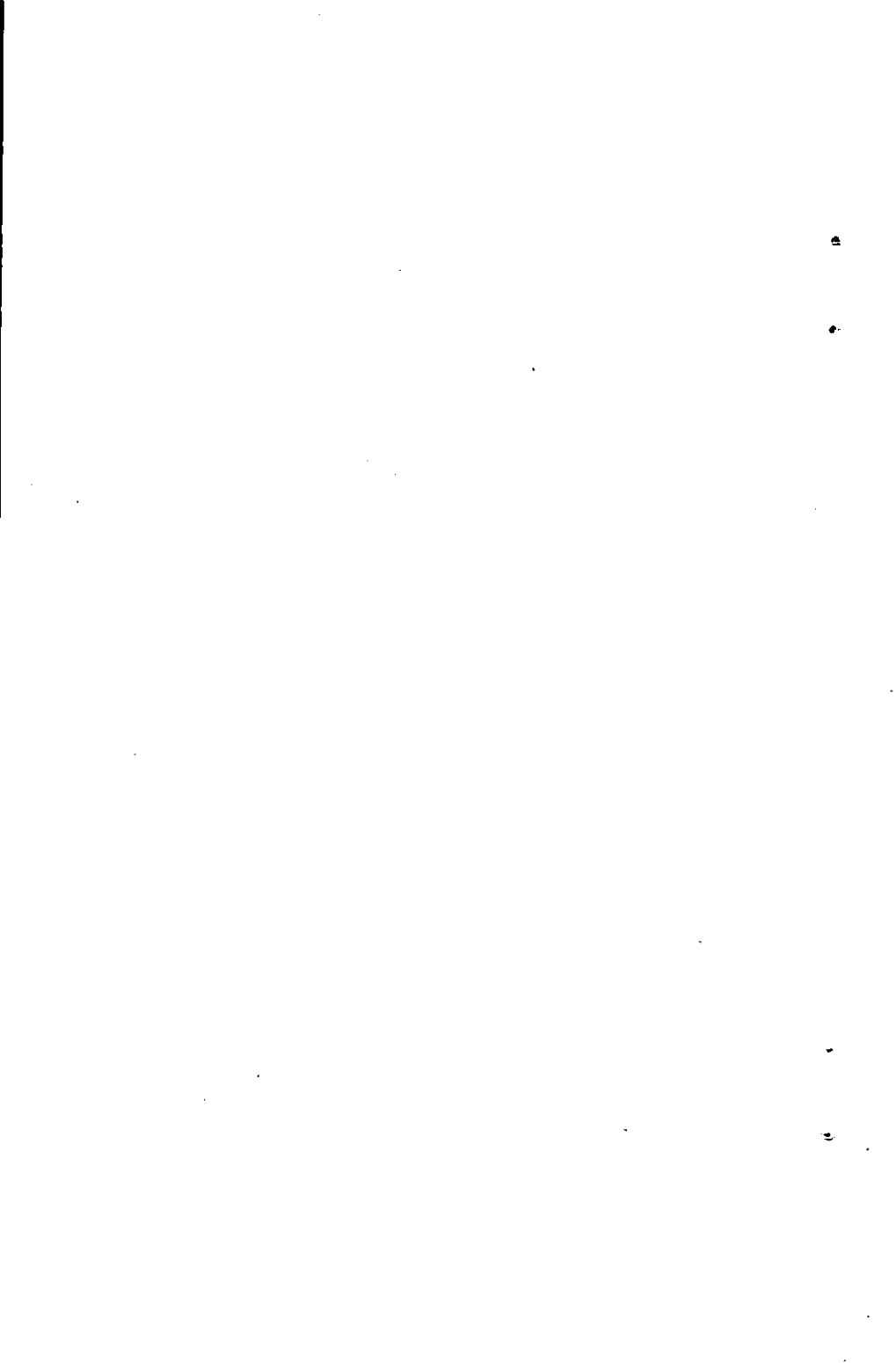
Service Offices

102 Carolina Hotel Building
Raleigh, North Carolina

219 Jefferson Hotel Building
Columbia, South Carolina

INDEX TO ADVERTISERS

	PAGE
American Brass Company.....	147
American Lumber and Treating Company.....	148
Associated General Contractors of America.....	160
Atlas Supply Company.....	157
Bonsal, W. R., Company.....	151
Borden Brick and Tile Company.....	154
Buckingham-Virginia Slate Corporation.....	158
Capital Printing Company	155
Dillon Supply Company.....	153
Grinnell Company	152
Grove Stone and Sand Company.....	156
Martin Millwork Company.....	156
North Carolina Chapter, American Architects.....	150
North Carolina Granite Corporation.....	147
North Carolina Home Insurance Company.....	148
Pomona Terra-Cotta Company.....	149
Thompson Electrical Company.....	157
Virginia-Carolina Clays, Inc.	146
Westinghouse Electric Company.....	159



LIST OF BULLETINS
issued by
The Engineering Experiment Station

- Research Bulletin No. 2. "A Highway Spiral" by Harry Tucker.
- Bulletin No. 1. "County Roads: Organization, Construction and Maintenance" by Harry Tucker, James Fontaine and L. D. Bell.
- Bulletin No. 2. "Tests of Face and Common Brick Manufactured In North Carolina" by A. F. Greaves-Walker and James Fontaine.
- Bulletin No. 3. "Poles from North Carolina Forests" by Wm. Hand Browne, Jr., and James Fontaine.
- Bulletin No. 4. "Motor Vehicle Accidents in North Carolina" by Harry Tucker.
- Bulletin No. 5. "Occurrence and Physical Properties of North Carolina Marble" by Jasper L. Stuckey and James Fontaine. Price twenty cents.
- Bulletin No. 6. "The Occurrence, Properties, and Uses of the Commercial Clays and Shales of North Carolina" by A. F. Greaves-Walker, N. H. Stolte, and W. L. Fabianic. Price fifty cents.
- Bulletin No. 7. "Highway Grades and Motor Vehicle Costs" by Howard Burton Shaw and James Fontaine. Price twenty cents.
- Bulletin No. 8. "Financial Management for Highways" by Marc C. Leager. Price one dollar.
- Bulletin No. 9. "Highway Accidents in North Carolina and Guides to Safety" by Harry Tucker. Price fifty cents.
- Bulletin No. 10. "North Carolina Building Code" by the North Carolina Building Code Council. Price one dollar.

Copies of Bulletins Nos. 1 to 4 will be sent free upon request as long as the supply lasts.

CAPITAL PRINTING COMPANY
PRINTERS : BINDERS : DESIGNERS
RALEIGH . . . NORTH CAROLINA
